

Plate 1

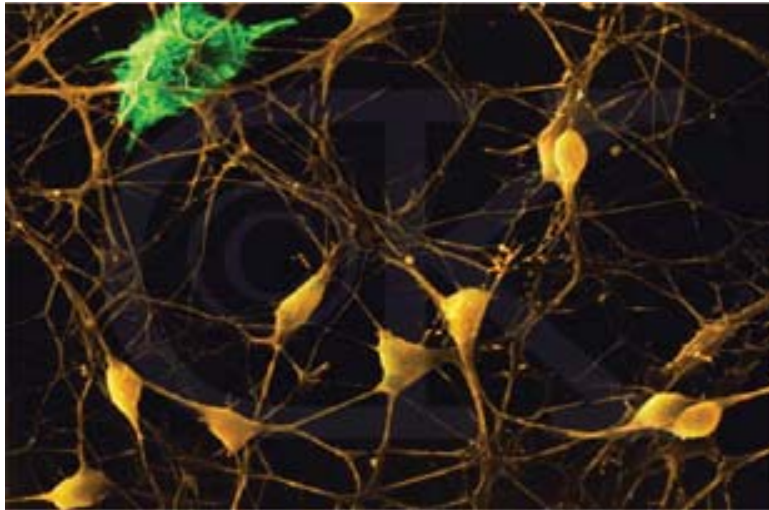


Fig. 4.1: The intertwining neurons of the nervous system

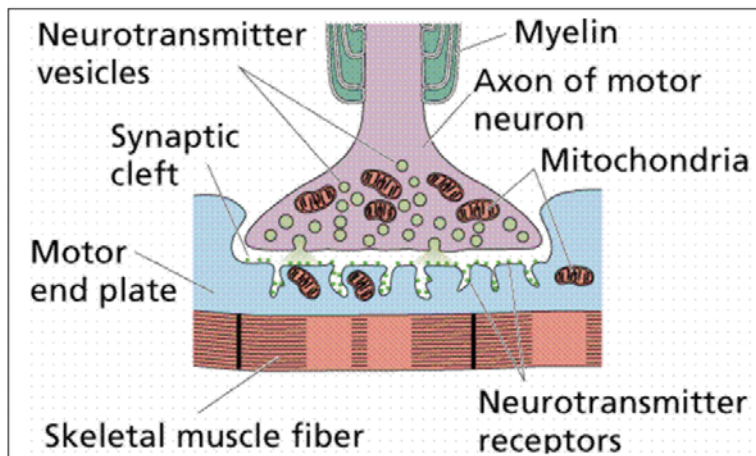


Fig. 4.4: The Neurotransmitters in the brain

Plate 2

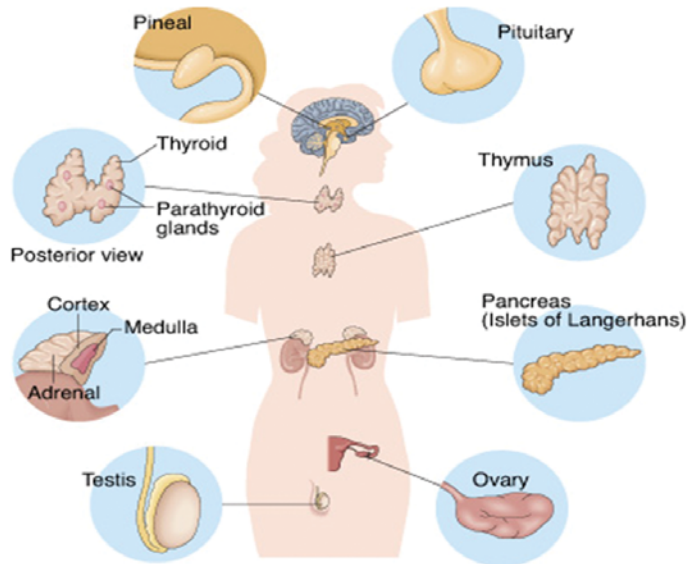


Fig. 4.6: The Endocrine System

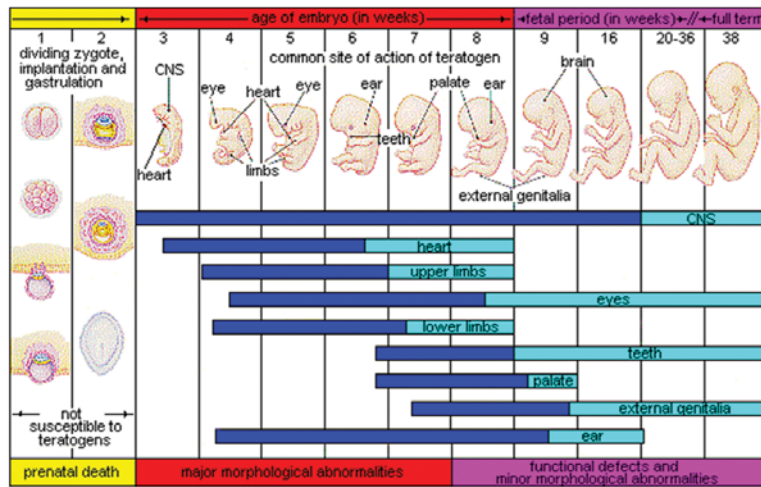


Fig. 5.1: The different stages of human development

Plate 3

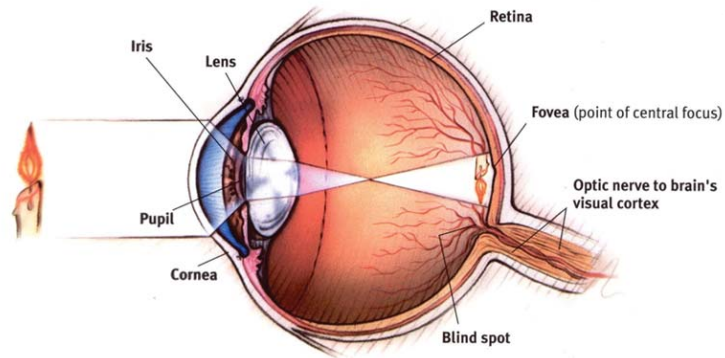


Fig. 6.2: The structures of the human eye

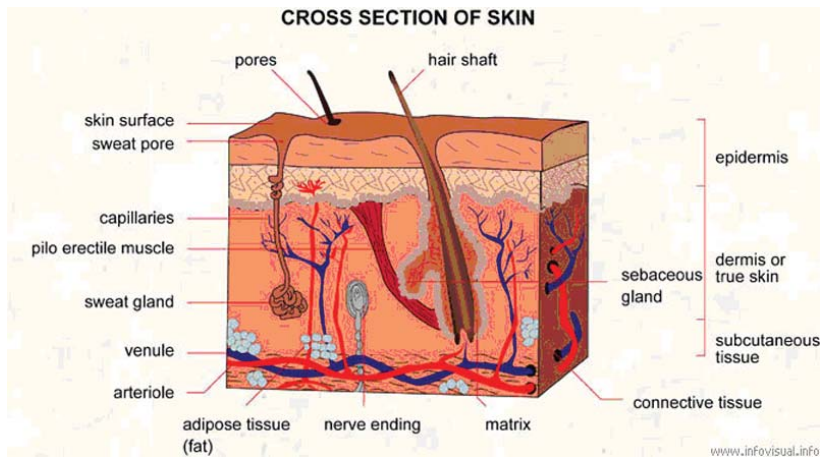


Fig. 6.4: The structure of the skin

Plate 4

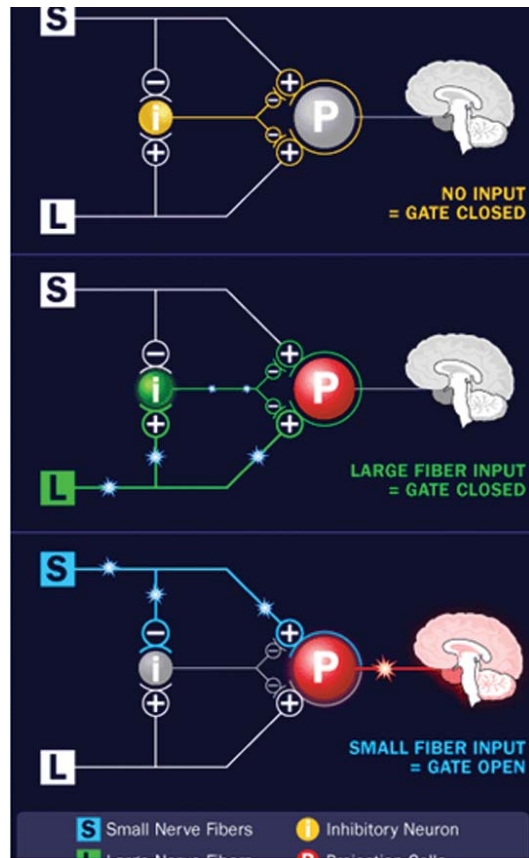


Fig. 6.5: The Melzack and Patrick Wall gateway for pain

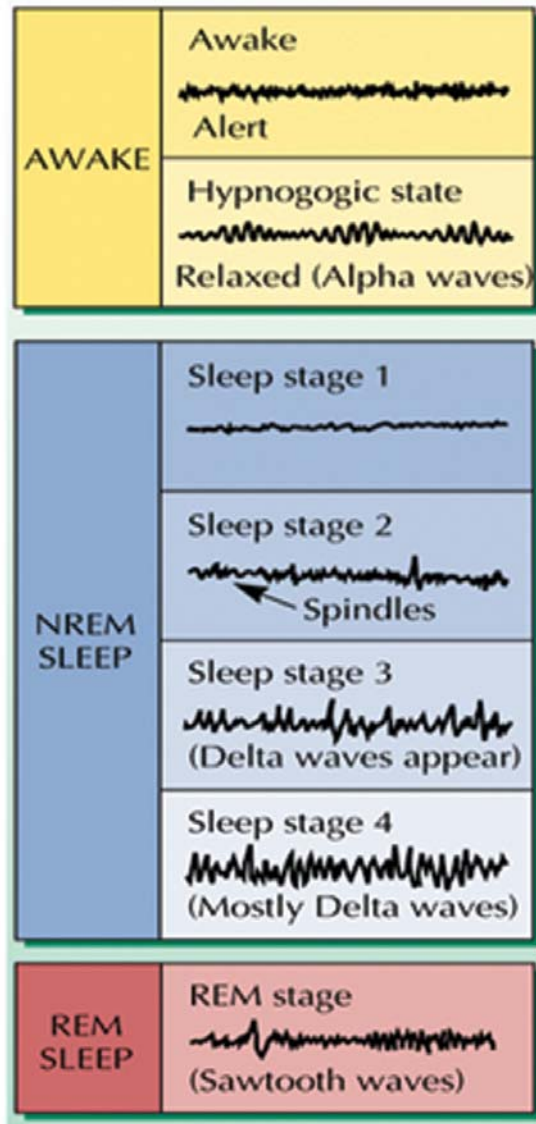
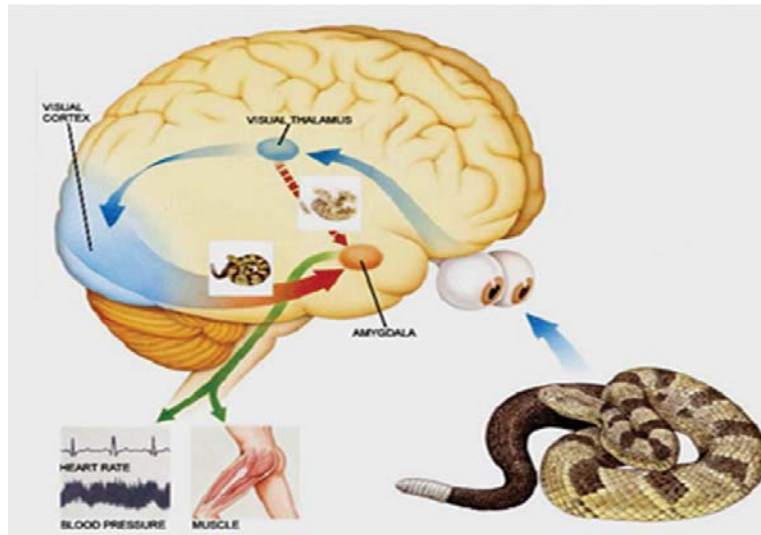


Fig. 6.2. The Brainwaves representing the stages of sleep

Plate 6



9.2: The pathway of emotion in the brain